



USER MANUAL

# Infinea® Tab Lite

For iPhone® 6/6s Plus/7Plus/8 Plus





# Contact Information

## Mobility Sales/ Technical Support Center

Infinite Peripherals, Inc.  
17681 Mitchell N  
Irvine, CA 92614

Toll-Free: (866) 278-7860  
Office: (949) 222-0300  
Website: [ipcmobile.com](http://ipcmobile.com)

## Headquarters/ Main Warehouse

Infinite Peripherals, Inc.  
2312 Touhy Avenue  
Elk Grove Village, IL 60007

Toll-Free: (800) 278-7860  
Office: (847) 818-1260  
Fax: (847) 818-1287

# Legal Notice

"Made for iPhone" means that an electronic accessory has been designed to connect specifically to the iOS device and is certified by the developer to meet Apple performance standards. Apple is not responsible for the operation of this device or its compliance with safety and regulatory standards. Please note that the use of this accessory with an iOS device may affect wireless performance.

## Compatible Devices

---

### iOS Compatibility

iPhone 6 Plus  
iPhone 6s Plus  
iPhone 7 Plus  
iPhone 8 Plus

# Trademarks

Infinite Peripherals, Mobilize Your Enterprise, Linea Pro, Infinea, Infinea Tab, and Infinea Omni are trademarks of Infinite Peripherals, Inc. All other trademarks are the property of their respective owners.



# Table of Contents

Overview	4	Turn on the Infineon Tab Lite	10
Technical Data	4-5	Magnetic Stripe Reader	10
Box Contents	6	Read NFC Cards	10
Getting Started	6	Troubleshooting	11
Product Description	7	Service the Infineon Tab Lite	12
Attach iOS Device to Otterbox uniVERSE case	7	Warranty	12
Battery Charging	8	Disclaimer	12
Developing Infineon Tab Lite Apps	8	Product Returns and Service	12
SRED Encrypted MSR Information	8	Symbols	13
Operational Modes	9	Federal Communications Commissions	13
Programmable Options	9		



# Overview

The Infinea Tab Lite is a compact, enterprise-grade mobile payment device featuring a magnetic card reader and NFC contactless card reader. The Lightning™ cable connects the Infinea Tab Lite to your iOS device. In addition, the Otterbox uniVERSE case is designed for plus-size iOS devices.

## Features

---

### Battery

Standard feature: one Li-Po rechargeable battery 3.7V/500mAh.

### Magnetic Card Reader

Built-in magnetic stripe reader/ The card reader incorporates a 3-track, bi-directional magnetic read head, requiring a single swipe to read field data from all three tracks.

### Contactless Reader

Optional Near-Field Communication (NFC) tag/card reader with read and write capability at 13.56 MHz.

### LED Indicators

LEDs for battery and device status indication and electro-magnetic buzzer are included.

## Accessories

---

Visit our website at <https://ipcmobile.com> or contact your Infinite Peripherals account representative for additional information about our current and future product offerings.

# Technical Data

## Physical Dimensions

---

### Processor

ARM™ Cortex® M3 based Security Micro-controller

### Dimensions (L x W x H)

102.5mm x 75mm x 25mm (4.3in x 2.95in x 0.99in)

### Compatibility

iPhone 6 Plus/6s Plus/7 Plus/8 Plus

### Weight

95g (3.35 oz.) without iOS device=



## Connectivity

---

### Battery Capacity

Rechargeable Li-ion Battery 3.7V/500mAh, charging from Lightning port or charging station

### Power Supply

5V through Lightning™ Connector  
5V through single charger

### Magnetic Stripe Reader

3-track bi-directional reader  
Type: ISO 7810, 7811, 7813  
1,000,000 magnetic card swipes

### Port

Lightning port for charging

### Buttons

One On/Off button

### Indicators

Visual battery status: 4 LEDs  
Audio: electromagnetic buzzer

### Near-Field Communication (NFC)

ISO/IEC 14443 Type A/MIFARE

MIFARE MINI

MIFARE CLASSIC-1K, MIFARE CLASSIC-4K

MIFARE ULTRALIGHT, ULTRALIGHT-C

MIFARE PLUS 2K/4K

DESFire card

And others

ISO/IEC 14443 Type B – supports most cards

ISO/IEC 15693 – supports most cards

- AMEX ExpressPay MagStripe and EMV
- Discover ZIP and D-PAS
- MasterCard PayPass MagStripe and M/Chip
- VISA PayWave MSD and qVSDC

## Certifications

---

CE, FCC, MFI, PCI, PTS 5.x, EMV Contactless Level 1

## Environment

---

### Temperature

Operation: -10°C to +40°C (14°F to +104°F)  
Storage: -20°C to +50°C (-4°F to +122°F)

### Relative Humidity

Operation and Storage: 5%-90%



# Box Contents

- Before using your Linea Pro 7i, remove the unit and any included accessories from the shipping carton and verify the contents against the packing list.
- Retain all packing materials, invoice, and bill of lading. These may be required to return the device for servicing later, or to process a claim with the shipping carrier.
- Carefully inspect the contents inside of the packaging for any signs of damage. If there are signs of damage, do not attempt to use the unit. Notify your account executive or contact technical support at <https://ipcmobile.com/devices>.
- Ensure the battery is fully charged prior to initial use.
- The unit includes a Li-Po rechargeable battery, Lightning™ receptacle port, and charging pads.

These items are included with your unit:

## Infinea Tab Lite (1)



# Getting Started

The Infinea Tab Lite allows you to transact credit card payments via the magnetic stripe reader and NFC contactless card reader, and pass that data onto compatible iOS applications.

The following helps you get the Infinea Tab Lite ready for use:

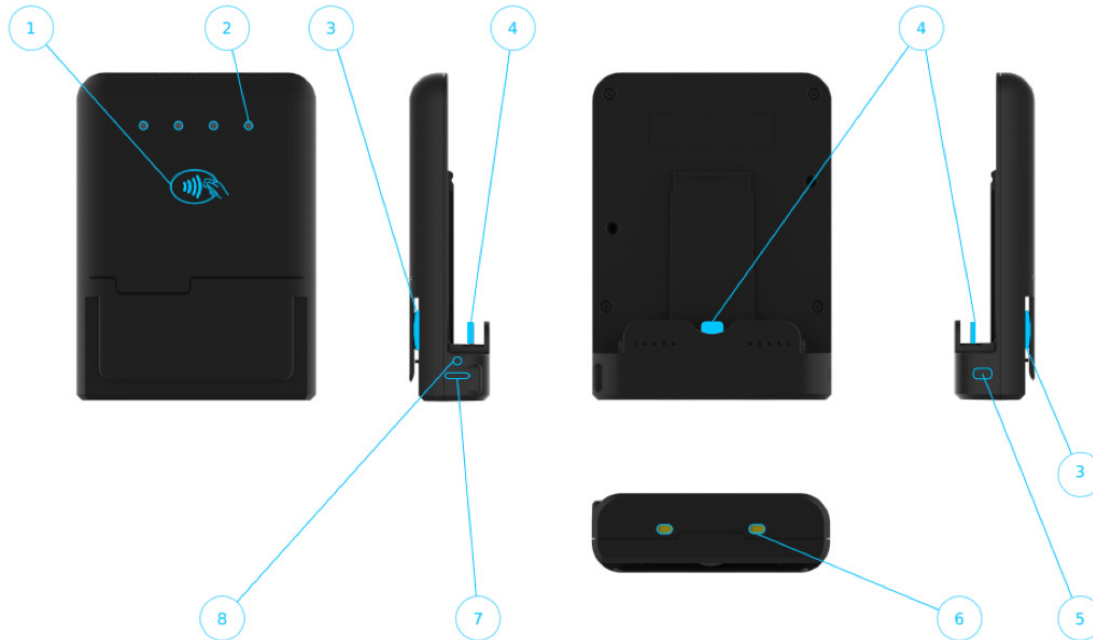
What to do	Section
Assemble the Infinea Tab Lite with your iOS device	Assembling Your Infinea Tab Lite
Fully charge battery before first use	Charging Your Infinea Tab Lite
Software required to operate the unit with your iOS device	Developing Applications for Your Infinea Tab Lite
Initializemagnetic stripe reader and NFC functionality	Turn on Your Infinea Tab Lite

**Note:** Use of the Near-Field Communication (NFC) features requires the installation of software. Contact your Infinite Peripherals account representative for available software.



# Product Description

- 1. Contactless Reader
- 2. Indicators for Contactless transactions/LEDs for device status
- 3. Magnetic Card Reader
- 4. Lightning™ Connector
- 5. On/Off Button
- 6. Charging Contacts
- 7. Lightning Receptacle Port
- 8. Battery Charging Indicator



## Attach iOS Device to Otterbox uniVERSE Case

- 1. Insert your iOS device into the Otterbox uniVERSE case.
- 2. Turn the iOS device face up, and then slide it onto the Lightning connector.





# Battery Charging

Before first use, ensure the battery is fully charged.

Your Infinea Tab Lite is shipped with a Li-Po rechargeable battery, Lightning™ receptacle port, and charging pads. When attached, the iOS device can be charged to a charging station or via the Lightning cable plugged into the Lightning port.

Use only the approved 5 volt, 2.1 amp DC adapters to charge the iOS device and Infinea Tab Lite together. Failure to do so may result in problems charging the unit and/or potential damage to the Infinea Tab Lite and/or iOS device.

The charging current provided is based on the connected power source:

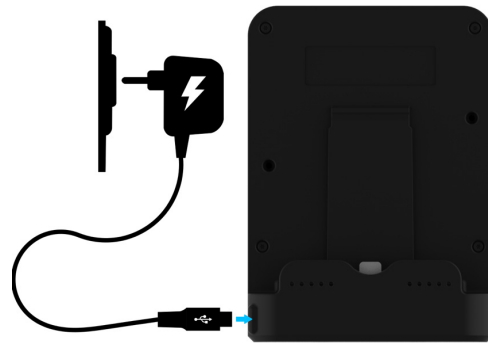
- Lightning port = 500mA
- Charging pads = 1000mA

**Note:**

If fully discharged, the charging time is less than one hour and 30 minutes.

## How to Charge Your Infinea Tab Lite

1. Gently connect the Lightning cable into the Lightning receptacle on the side of the unit.
2. Do not force the Lightning charging cable as this may damage the connector



# Developing Infinea Tab Lite Apps

Software is not provided with your Infinea Tab Lite. Please contact your reseller or Infinite Peripherals for Third Party software solutions. Integrating the Infinea Tab Lite into your iOS application requires the use of the Infinite Peripherals Universal Software Developers Kit (SDK).

The SDK incorporates an API specifically for developing applications to use Infinea Tab Lite v functionality.

For additional details on using the Infinite Peripheral Universal SDK, please refer to the appropriate SDK documentation.

For the latest Infinite Peripheral Universal SDK, please visit our developer portal at:

<https://developer.ipcmobile.com>

# SRED Encrypted MSR Information

The Infinea Tab Lite requires proper maintenance to ensure long and trouble-free operation to integrate the PCI PTS 5.x SRED-certified unit into your solution. This includes maintaining a proper battery charge to prevent the Infinea Tab Lite from entering Tamper Detect mode. When the battery is depleted or removed, the magnetic read head security feature is disabled and renders the unit unusable.

To prevent downtime, do not allow the battery to fully deplete, or remove the battery from the unit, and always place it on a charging station when not in use for extended periods.

**Note:**

If the security features are disabled or the battery is fully discharged and is in Tamper Detect mode, the unit must be sent back to Infinite Peripherals for servicing.





# Operational Modes

Before using your Infinea Tab Lite, the iOS device must be attached and the applications must be installed. Refer to Developing Apps for more information.




## Bootloader/Application Download

Press and maintain the Power button on the Infinea Tab Lite to access the boot loader/application download mode for the firmware. You'll hear a buzzer when the first LED is lit. When the second, white LED is lit, release the Power button. You'll hear a buzzer when the device is in the application download mode.

## System Mode

Press and maintain the Power button on the unit to access System Mode. You will hear a buzzer when the first LED is lit. When the third LED is lit, release the Power button.

LED	Operating Modes/System Errors
#1 On	Normal operating mode
Plus #4 Flashing	Tampered State
#2 On	Application download mode
#3 On	System Mode

Icon	Status
	Solid white icon indicates unit is turned off
	Solid green means battery is charging
	Flashing green indicates battery is fully charged

The LEDs on the Infinea Tab Lite indicate conditions of operation, including active connection, and charging conditions. These conditions and their corresponding LED indication are

# Programmable Options

Configure these optional settings via the SDK.

## Charging Current

Charging current may be set to 500mA (default) or 1A.

## Pass-Through Sync

When enabled and the Lightning cable is plugged in, the iOS device is with a Windows computer or an Apple MacOS.

When syncing is required, enable the Pass-Through Sync setting in the SDK. When this setting is disabled and the cable is plugged in, the Infinea Tab Lite only charges.

## Time Out

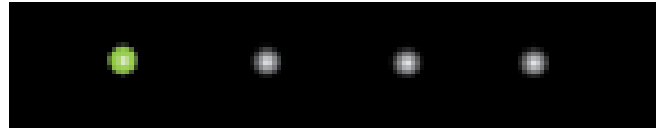
Default setting is 60 seconds.

Maximum is 5400 seconds (90 minutes).



## Turn on the Infinea Tab Lite

1. Press the On button on the side of the unit.
2. Hold the button until you see the first three LEDs illuminated, and then release the button.



## Magnetic Stripe Reader (MSR)

The built-in magnetic stripe reader (MSR) has a three-track bi-directional encryption-capable magnetic read head. A single swipe reads information from all three tracks.

- To read card data, swipe a card with an even sliding motion.
- The magnetic card must face in the same direction as the face of the iOS device.
- Keep the edge of the card flat on the inner back of the stripe reader to ensure the magnetic stripe passes over the read head evenly.



## Read NFC Cards

The NFC receiver/transmitter is located on the back of the unit, below the LEDs, and is denoted by the WiFi symbol.

1. Tap the contactless card reader option in the iOS application.
2. Place the NFC card/tag over the NFC label on the transmitter/receiver, keeping the face of the card flat on the transmitter and as close as possible.
3. Remove the card/tag after the display indicates the transaction is complete. The data is sent from the reader to the iOS device.

**Note:**

Depending on the type of NFC card/tag, it may be necessary to make direct contact with the surface of the receiver/transmitter for proper reading/writing.





# Troubleshooting

If you experience problems with your Infinea Tab Lite, which are not addressed in the Troubleshooting section, contact <https://ipcmobile.com/support>

## General Issues

Issue	Possible Cause
Infinea Tab Lite does not connect to the iOS device	<ul style="list-style-type: none"> <li>Battery is too low or fully discharged</li> <li>Power not on</li> <li>Not properly connected to the device in the iOS settings menu</li> </ul>

## Magnetic Stripe Issues

Issue	Possible Cause
Payments are not accepted	<ul style="list-style-type: none"> <li>Battery is too low or fully discharged</li> <li>Unit is asleep or not powered on</li> <li>Card could not be read</li> <li>Unit in a tampered state</li> </ul>
Only partial card data is returned after magnetic swipe accepted	<ul style="list-style-type: none"> <li>Card was swiped too slowly or not properly inserted into the unit</li> <li>Magnetic stripe on the card is damaged</li> <li>Magnetic read-head is faulty or damaged</li> </ul>
No card data returned after swiping	<ul style="list-style-type: none"> <li>Device not powered on</li> <li>Swipe method incorrect</li> <li>Faulty read head</li> <li>Magnetic stripe is unreadable</li> <li>Secured head reader requires decryption of encrypted data</li> <li>Device is in a tampered state</li> </ul>

## Contactless Card Reader

Issue	Possible Cause
NFC does not activate	<ul style="list-style-type: none"> <li>Battery is too low or fully discharged</li> <li>Unit is not powered on</li> <li>Faulty NFC reader</li> </ul>
NFC data is not returned from card/tag	<ul style="list-style-type: none"> <li>Battery is too low or fully discharged</li> <li>Unreadable NFC card/tag</li> <li>Faulty NFC Reader</li> <li>Software decoded incorrectly</li> </ul>
Only partial data is returned from card/tag	<ul style="list-style-type: none"> <li>Unreadable NFC card/tag</li> <li>Faulty NFC Reader</li> <li>Software decoded incorrectly</li> </ul>



# Servicing the Infinea Tab Lite

The Infinea Tab Lite is designed with an internal, Lithium-ion rechargeable battery. If the Infinea Tab Lite battery is not charging properly, or the unit is not powering on, contact your Infinite Peripherals representative or <https://ipcmobile.com/support>

Encrypted functionality with special key protection features is included.

**Note:**

Any attempt to open the unit may result in the erasure of the encryption key and disabling of the card-reading features. See SRED Encrypted MSR Information below for additional information.

## Warranty

Infinite Peripherals does not warrant, and is not responsible for, any damage to the Infinea Tab Lite (“Product”) or the assembled iOS device as a result of liquid or solid particle intrusion into the Product, or damaged caused by dropping the Product with the assembled iOS device. If a material or workmanship defect arises with regard to any Infinite Peripherals product, and a valid claim is received within the Warranty Period, Infinite Peripherals (at our sole discretion) will repair the Product using new or refurbished parts, or replace the Product with a new or refurbished Product.

For purposes of this limited warranty, “refurbished” means a product or part that has been substantially returned to its original specifications. In the event of a defect, these are your exclusive remedies.

## Disclaimer

NO WARRANTY. This technical documentation is provided AS-IS. Further, the documentation does not represent a commitment on the part of. Infinite Peripherals, Inc does not warrant that it is accurate, complete or error free. Any use of the technical documentation is at the risk of the user. Infinite Peripherals, Inc reserves the right to make changes in specifications and other information contained in this document without prior notice, and the reader should in all cases consult Infinite Peripherals, Inc to determine whether any such changes have been made. Infinite Peripherals, Inc shall not be liable for technical or editorial errors or omissions contained herein; nor for incidental or consequential damages resulting from the furnishing, performance, or use of this material. Infinite Peripherals, Inc does not assume any product liability arising out of or in connection with the application or use of any product or application described herein.

## Product Returns and Servicing

Use the link in step 1 to create an account and gain access to our Knowledge Base and online support services. Through our online support center, you'll be able to download files, open a Support Ticket, manage your RMAs, view your account Profile and subscribe to Alerts.

**To request a RMA:**

1. Create a user account in the RMA Support Portal at <http://ipcmobile.com/support/rma/>
2. Login to your user account, and then click Create RMA Request.
3. Read the instructions provided and complete the online request form.
4. Note the assigned RMA number and write it clearly on your shipping carton.
5. Ship your equipment back to us using the address provided.



# Symbols

Symbol	Description
	Refer to the instructions before using this product
	Manufacturer
	Manufacture Date
	Caution
	Serial Number
	Part Number
	Waste Electrical and Electric Equipment
	Complies with part 15 of the FCC rules

# Federal Communications Commissions

## 15.21

You are cautioned that changes or modifications not expressly approved by the part responsible for compliance could void the user's authority to operate the equipment.

## 15.105(b)

This equipment has been tested and found to comply with the limits for a Class B digital device, pursuant to part 15 of the FCC rules. These limits are designed to provide reasonable protection against harmful interference in a residential installation. This equipment generates, uses and can radiate radio frequency energy and, if not installed and used in accordance with the instructions, may cause harmful interference to radio communications. However, there is no guarantee that interference will not occur in a particular installation. If this equipment does cause harmful interference to radio or television reception, which can be determined by turning the equipment off and on, the user is encouraged to try to correct the interference by one or more of the following measures:

- Reorient or relocate the receiving antenna.
- Increase the separation between the equipment and receiver.
- Connect the equipment into an outlet on a circuit different from that to which the receiver is connected.
- Consult the dealer or an experienced radio/TV technician for help.

Operation is subject to the following two conditions:

1. This device may not cause interference and
2. This device must accept any interference, including interference that may cause undesired operation of the device.

## FCC RF Radiation Exposure Statement

This equipment complies with FCC radiation exposure limits set forth for an uncontrolled environment. End users must follow the specific operating instructions for satisfying RF exposure compliance. This transmitter must not be co-located or operating in conjunction with any other antenna or transmitter.